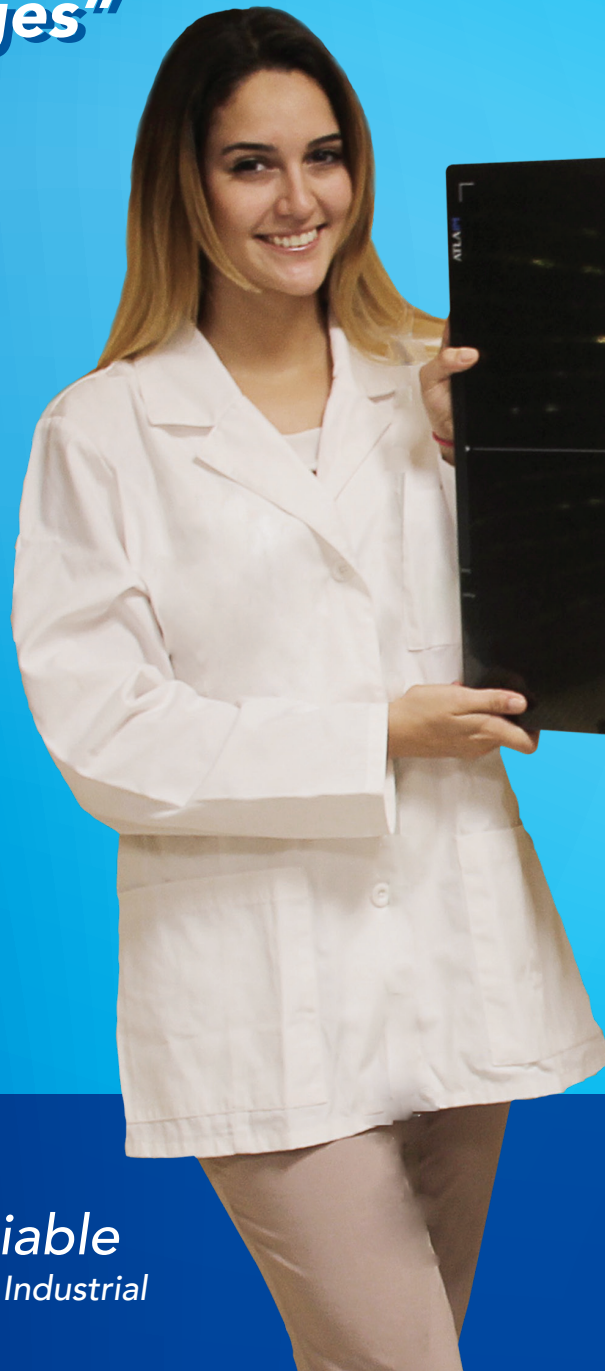


DR Digital X Ray Detector

***"Better and
Faster Images"***



PLUG & PLAY
Modern and Reliable
For: Human, Veterinary & Industrial

Automatic and Light Weight

EASY AND ECONOMIC SOLUTION TO DIGITIZE ANY X RAY EQUIPMENT

Options Available:

Static PIXX1717 (43x43 cm), PIXX1417 (36x43 cm), PIXX 1212 (30x30 cm).
Dynamic: 8 frames per second

Easy to carry and to Operate- MultiUse:

Ambulance, Clinics, Portable...etc.

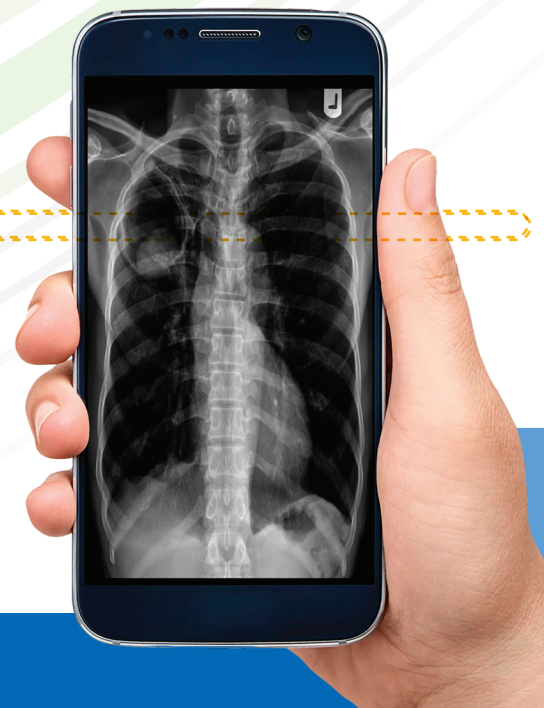


Wireless- Secure

**NO CONECTION
NO CALIBRATION**

It works with any X Ray equipment.

Detector stores images that could be seen in a
cell or tablet



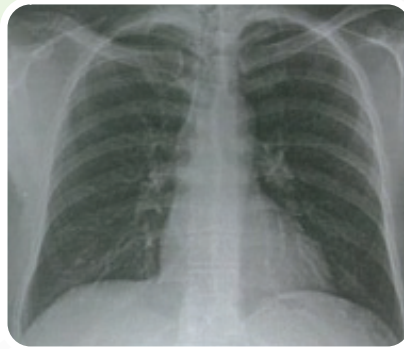
PIXX DR

No connection Flat Panel

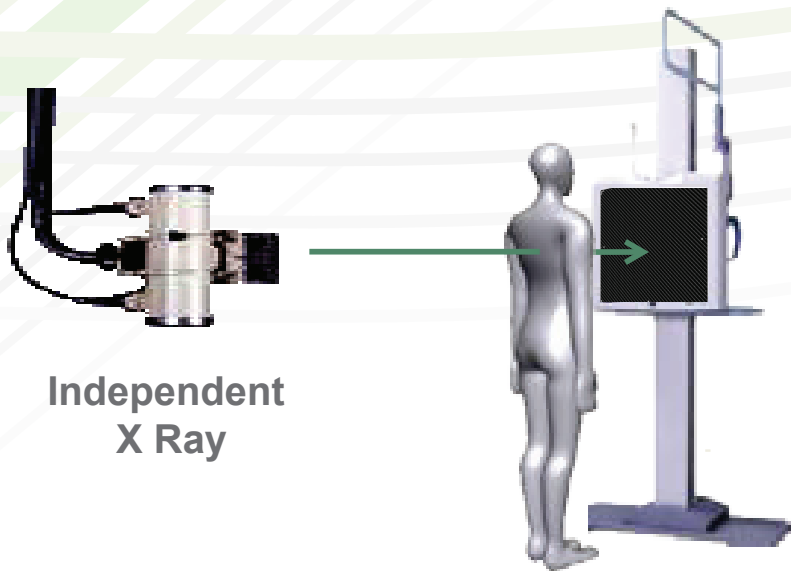
Adquisition and Viewing Software- Works with EMR

MINIPACS- DICOM: Image Store - Send - Print - CD/DVD - Worklist - Organizes Patient Data and Images.

Includes all tools to measure and manipulate images: Zoom, Window, Level, Inversion, Flip, Angle, Distance, Crop, Divides Screen for multiple Display,



High Productivity- High Quality Images in a short time



HIGH RESOLUTION



**Captures image
in 3 seconds**

NO WAITING TIME

Automatic radiation sensing- Very Sensitive- Lower Dosis. Integrates with HIS/RIS systems.

**TECHNICAL SUPPORT
AND TRAINING**

LATEST DIGITAL X RAY TECHNOLOGY

For Hospitals, Clinics, Remote Centers,
Ambulance, Private Offices.

PIXXDR

FEATURES

One detector works at the table, at the wall bucky and also portable with any X Ray system

High Quality Image - High Signal/Noise Ratio

Fast Acquisition: 3 Seconds- Several Sizes Available - Continuous Automatic Acquisition-AED Plus

Stand Alone: The detector acquires and stores images without computer

Images can be seen in a Cell or tablet.

SPECIFICATIONS

Application	General Radiography, Human, Veterinary & Industrial
Sensor	a-Si TFT array Flat Panel Detector
Conversion Screen	CsI/GOS
Active Area	17 x 17 inch (430mm x 430mm)
Sensor Pixel	3,072 x 3,072 (9.4M pixels)
Image Data	16 bit
Trigger Mode	AED(Automatic Exposure Detection), Manual Trigger
Calibration Mode	ACC(Auto Calibration Control), Manual Calibration
Data Transfer Time	Less than 1 sec.
Capture Cycle Time	3 ~ 5 sec. (Approx.)
Wired Interface(Data Output)	Gigabit Ethernet
Voltage	AC 100 ~ 240V, 50/60Hz I DC 22~24V, 5A
Wireless Standard	IEEE 802.11ac
Battery Type	Lithium Ion Polymer Battery
Environment	Storage : -10°C ~ 60°C, 10% ~ 90% RH(Non-condensing) Operation : 10°C ~ 35°C, 20% ~ 75% RH(Non-condensing)
Dimensions(W x L x T)	460mm x 461 mm x 15mm
Weight	Wired 2.75kg(6.0lb) / Wireless 3.15 kg(6.95lb)

OPTIONS

Fixed: PIXX1717 (43x43cm), PIX1417(36x43cm), PIXX1212 (30x30cm)

Dynamic: 8 Frames per second

Wireless and Wired Option (with HDMI cable)

With TFT in glass or in Plastic



EMI MEDICAL EQUIPMENT, Inc.
 MIAMI-FLORIDA-USA
 Whatsapp: +1 305-725-8635
info@emimedequip.com
www.emimedequip.com



MRI - CT - X RAY - DR - PARTS - TECHNICAL SUPPORT

MANUFACTURER

PIXXGEN CORPORATION

1018, 1019 Sicox Tower, Sangdaewon, Seongnam, Gyeonggi, 462-120, Republic of Korea